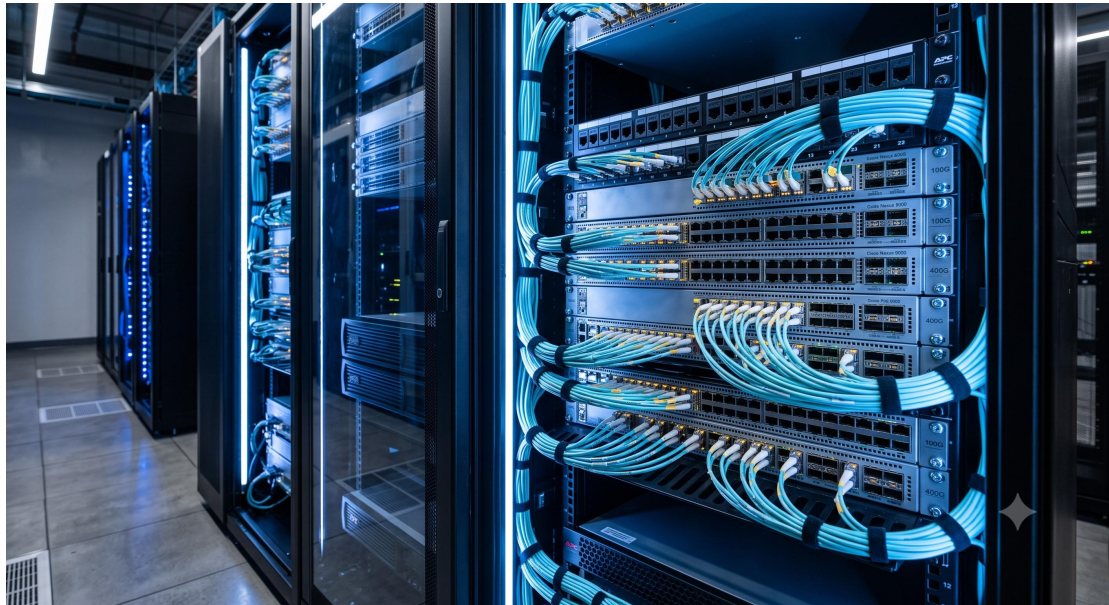


100G/400G Optical Transceiver Platform Specification & Architectural Whitepaper

PRODUCT IDENTIFICATION

This document serves as the definitive technical reference for the [VENDOR_NAME] 100G/400G Optical Transceiver Family, a comprehensive suite of pluggable modules engineered to address the escalating bandwidth demands of hyperscale data centers, metro core networks, and 5G xHaul transport infrastructures. This whitepaper delineates the hardware architecture, optical performance parameters, power efficiency profiles, and rigorous compliance standards that position this transceiver family as the optimal solution for next-generation network migrations. The portfolio includes QSFP28, QSFP-DD, and OSFP form factors, supporting a diverse array of optical interfaces including SR, DR, FR, LR, and ZR variants, enabling seamless interoperability across multimode and single-mode fiber infrastructures.



SYSTEM HARDWARE TOPOLOGY

The 100G/400G Optical Transceiver Family is architected around a highly integrated, low-power DSP (Digital Signal Processor) chipset, combined with a high-sensitivity PIN or APD photodetector array and an externally modulated laser (EML) or silicon photonics (SiPh) optical engine. This topology is designed to mitigate transmission impairments such as chromatic dispersion (CD) and polarization mode dispersion (PMD) through advanced digital signal processing algorithms, including FEC (Forward Error Correction). The modules are designed to comply with the industry-standard electrical interfaces (e.g., 8x50G PAM4 for 400G) and optical interface specifications defined by the IEEE 802.3bs, 802.3cm, and 800G Pluggable MSA.

DATA & CONTROL PLANE CAPABILITIES

The data plane operates at line-rate speeds of 100 Gigabit Ethernet (GbE) and 400 GbE, utilizing PAM4 (Pulse Amplitude Modulation 4-level) modulation to achieve spectral efficiency. The control plane is managed via a standardized I2C or MDIO interface, providing comprehensive digital diagnostics and monitoring (DDM/DOM) functionality. This includes real-time access to critical parameters such as supply voltage, transceiver temperature, laser bias current, transmit optical power, and receive optical power. The transceivers support a flexible rate adaptation mechanism, allowing them to operate in different lane configurations (e.g., 2x50G for 100G, 8x50G for 400G).

COMPONENT BREAKDOWN

- Optical Sub-Assembly (OSA): For 100G variants, a 4x25G NRZ or 2x50G PAM4 architecture is employed. For 400G variants, a parallel 8x50G or 4x100G PAM4 architecture is used, leveraging CWDM4 or LAN-WDM wavelength division multiplexing to reduce fiber count.
- DSP Chipset: State-of-the-art 7nm CMOS technology, offering exceptional power efficiency (approximately < 4.5W for 100G and < 12W for 400G modules).
- Microcontroller: An embedded ARM Cortex-M0 processor for monitoring, control, and firmware management.

- EMI Shielding: A robust metal enclosure with a comprehensive EMI/EMC shielding design to ensure compliance with FCC and CE standards, preventing electromagnetic interference within high-density switch chassis.

OPERATIONAL SPECS MATRIX

All modules are designed for a standard operational temperature range (0 to 70°C for commercial, -40 to 85°C for industrial) and a relative humidity range of 5% to 95% (non-condensing). The module's mechanical footprint adheres to the SFF-8636 and SFF-8679 specifications for high-density front-panel pluggability, with a standard duplex LC or MPO optical connector interface.

Parameter	Specification
Form Factor	QSFP28, QSFP-DD, OSFP (per variant)
Data Rate per Channel	50G PAM4, 100G PAM4
Total Aggregate Capacity	100 Gb/s to 400 Gb/s
Optical Connector	Duplex LC, MPO-12 or MPO-16
Reach (MMF/SMF)	100m (SR), 500m (DR), 2km (FR), 10km (LR), 80km (ZR)
Power Consumption	<4.5W (100G), <12W (400G)
Operating Case Temperature	0°C to 70°C (Com.) / -40°C to 85°C (Ind.)

Diagnostics Interface	MDIO/I2C with DDM
FEC Support	KP4, RS-FEC, LDPC
Laser Safety Class	Class 1 Laser per IEC 60825-1

REGULATORY COMPLIANCE

The 100G/400G Optical Transceiver Family is designed to meet the stringent requirements of international regulatory bodies and industry standards:

- IEEE 802.3bs (400G) and IEEE 802.3cd (200G/400G) for Ethernet.
- 100G Lambda MSA and 400G FR4 Specification.
- IEC 60825-1 (Class 1 Laser Safety), ensuring product safety and compliance.
- RoHS and REACH directives for environmental safety and sustainability.
- UL/CSA standards for electrical safety and telecommunications.
- GR-468-CORE and GR-326-CORE for telecom reliability and fiber optic connector performance.

